



6502B

RF Distribution Module

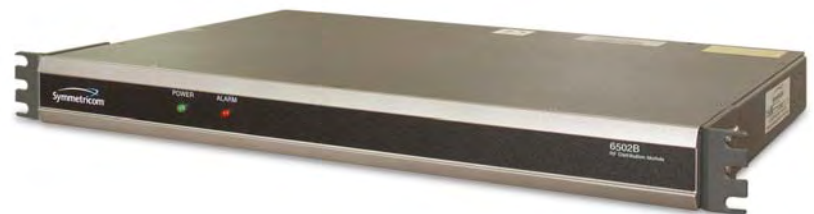
KEY FEATURES

- Low Phase Noise
- High Channel Isolation
- Ten Channel Output Distribution
- Daisy Chain For More Than 100 Outputs

The Symmetricom 6502B Distribution Module is a ten channel, RF distribution amplifier packaged in a 1U rack mount chassis. It is comprised of ten, low phase noise RF amplifiers that maintain high channel isolation (>100dB). Up to ten units can be daisy chained together to give up to 100 outputs or each output of one unit can be used as a source for other 6502B units to give almost infinite expansion capability with virtually no signal degradation.

The 6502B standard configuration accepts input frequencies from 0.1MHz to 10MHz at 1Vrms amplitude and provides ten buffered outputs of the same frequency. Each output and input has an alarm indicator that warns of either a loss of signal or a signal of insufficient amplitude.

The 6502B is also available in custom configurations. Please contact Symmetricom with any specific requirements.



6502B RF Distribution Module

6502B Specifications

ELECTRICAL SPECIFICATIONS

- RF output (ten)

Frequency:	0.1 to 10 MHz
Level:	1 V rms (nominal)
Gain:	1 (nominal)
Harmonic distortion:	<-40dB
Non-harmonic signals:	<-80dB
Load impedance:	50Ω
Isolation:	>100dB*
Connectors:	BNC

*Isolation between channels one to ten >130dB
- Additive SSB phase noise

(1 Hz Bandwidth)	Offset from carrier
1 Hz	-120dB
10 Hz	-135dB
100 Hz	-145dB
1,000 Hz	-155dB
10,000 Hz	-160dB
- RF input

Frequency:	0.1 to 10 MHz
Level:	1 V rms (nominal)
- Alarm output

Summary alarm indicates failure of any output signal.

Each output & main:	Red LED
Non-alarm condition:	Relay energized (fail safe) C Form contacts
Alarm output disable:	Panel switch
Connector:	9 pin D-male
- Controls & indicators

Power:	Green LED, power is connected
Alarm:	Red LED, signal output failure

Please note: If input level is less than 10dBm specify low alarm threshold version (-509).

ENVIRONMENTAL & PHYSICAL SPECIFICATIONS

- Temperature (operating): 0°C to 55°C
- Relative humidity: 0 to 95%, non-condensing
- Power requirements

AC input (±15%):	90 - 120 VAC, <10W 180 - 265 VAC, <10W
DC input (optional):	180 to 70 VDC, 10W
- Dimensions

Height:	1U (~1.75 inches) [4.44 cm]
Width:	19" [48.26 cm]
Depth:	12" [30.48 cm]
- Weight: <5 lbs. (2.25 Kg)
- MTBF: >500,000 hrs

ORDERING INFORMATION

- | | Part No. |
|---------------------------------------|-----------------|
| • 6502B Standard Configuration | 14364-101 |
| • 6502B with DC input | 14364-102 |
| • 6502B with option 509 | 14364-104 |
| • 6502B with option 509 and DC input | 14364-105 |
| • 6502B without alarm override switch | 14364-106 |



Rear View



SYMMETRICOM, INC.
 2300 Orchard Parkway
 San Jose, California
 95131-1017
 tel: 408.433.0910
 fax: 408.428.7896
 info@symmetricom.com
 www.symmetricom.com